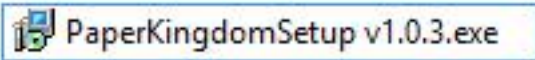


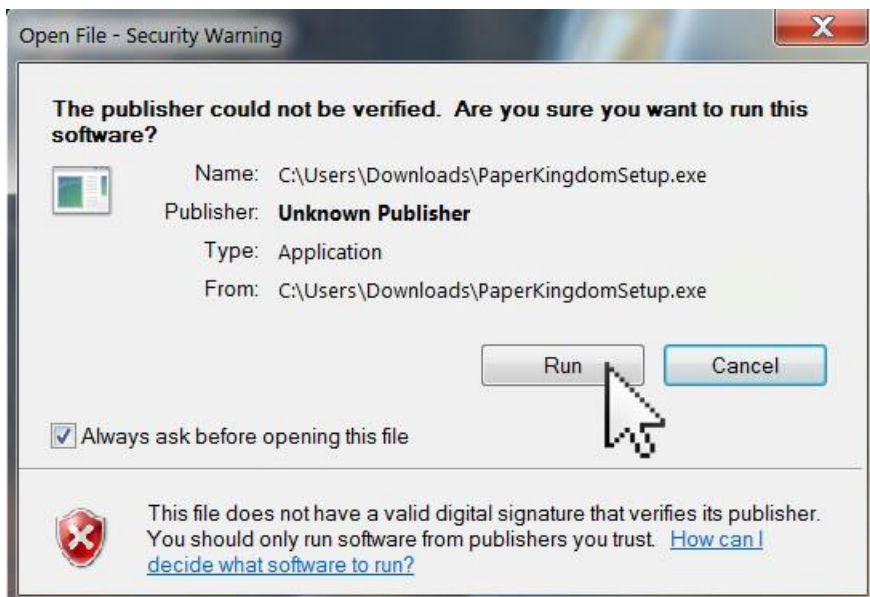
Paper Kingdom Installation Instructions – Windows 7

Thank you for your interest in playing Paper Kingdom! This document will walk you through the installation steps needed to get Paper Kingdom working on your Windows 7 computer. Follow along with this installation guide to get the game running on your computer.

1. If your computer is currently running the Windows operating system, download the latest version of the Paper Kingdom game software for the Windows operating system from the nhlbi.nih.gov website.
2. Once the Paper Kingdom software has been downloaded to your computer, double-click on the installation file:



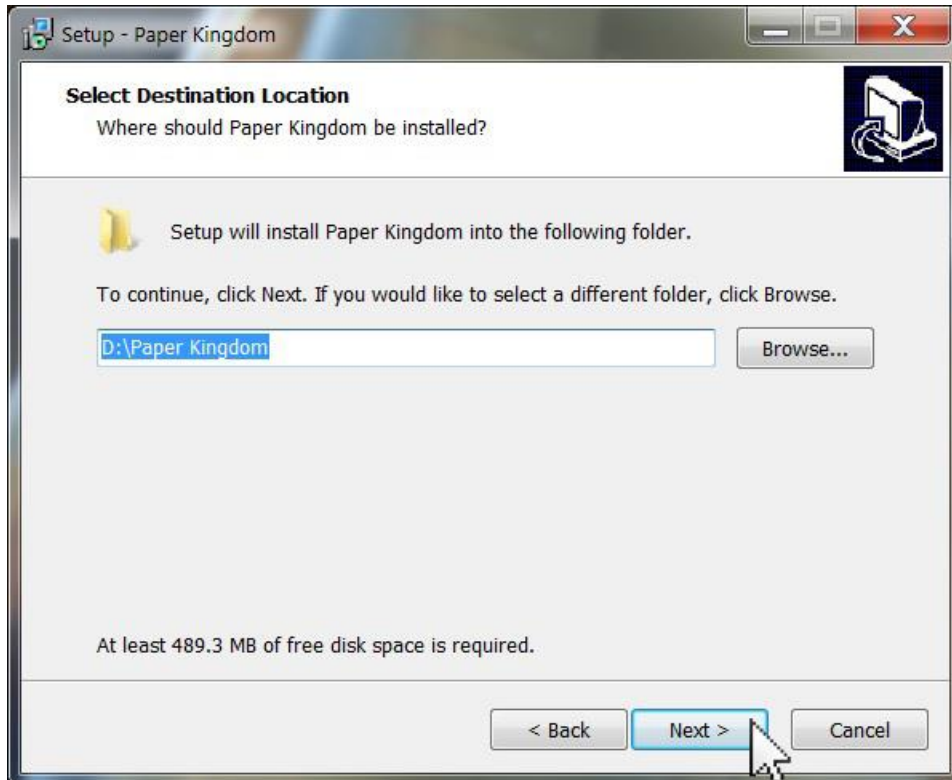
3. An Open File – Security Warning box will appear. This is normal. Click on the **Run** button to continue the installation.



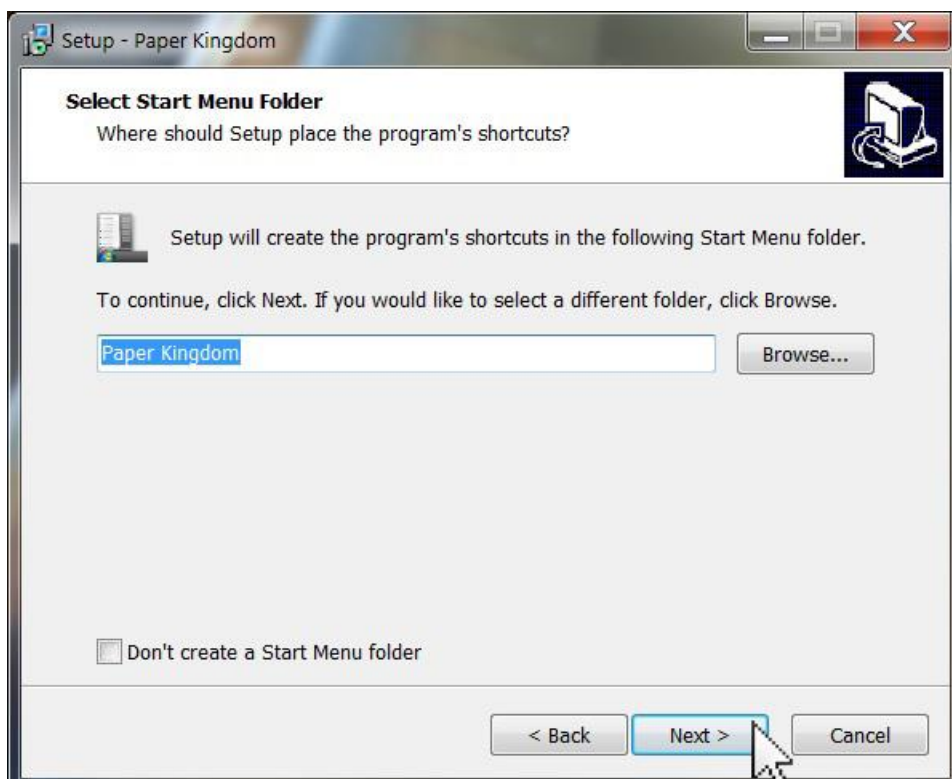
4. The Setup – Paper Kingdom box will appear. Click the **Next** button to continue the installation.



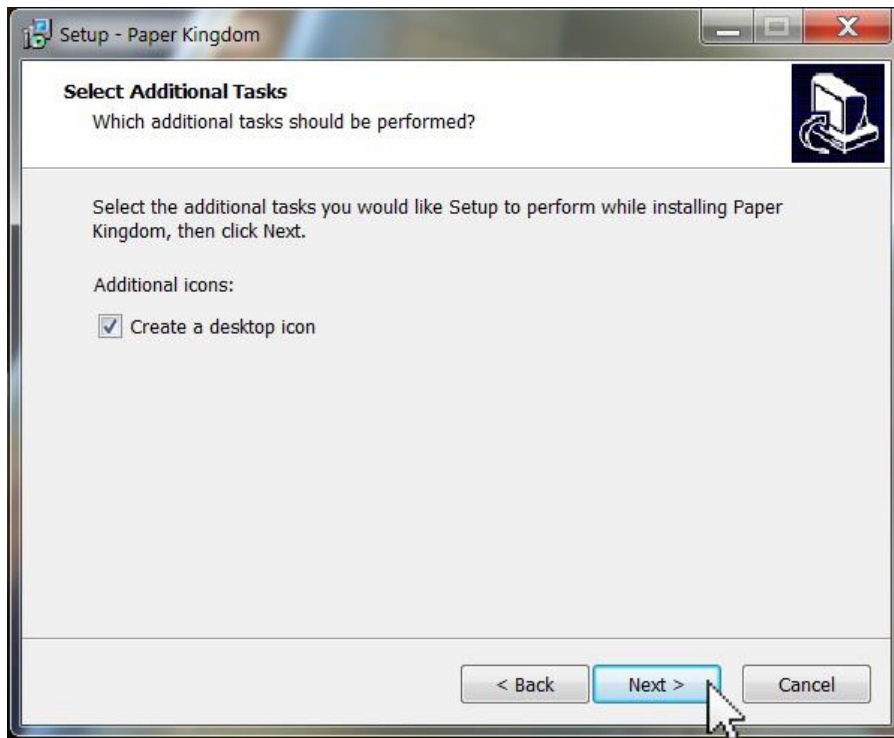
5. The Setup – Paper Kingdom box will appear. Review the location where the game will be installed and/or make changes as you wish. Click on the **Next** button to continue the installation.



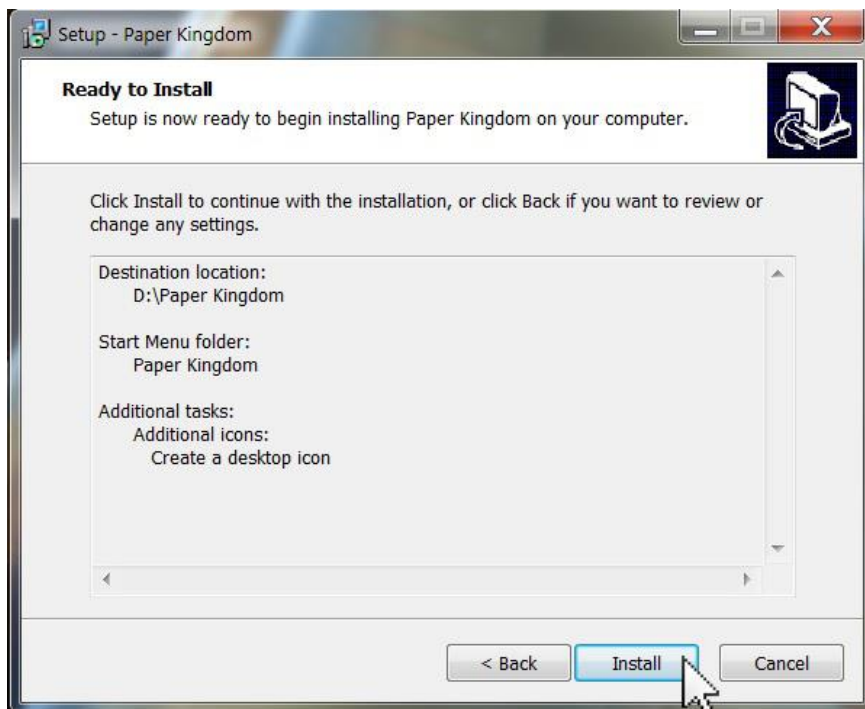
6. The Select Start Menu Folder box will appear. Review the location where the game's folder will be and/or make changes as you wish. Click on the **Next** button to continue the installation.



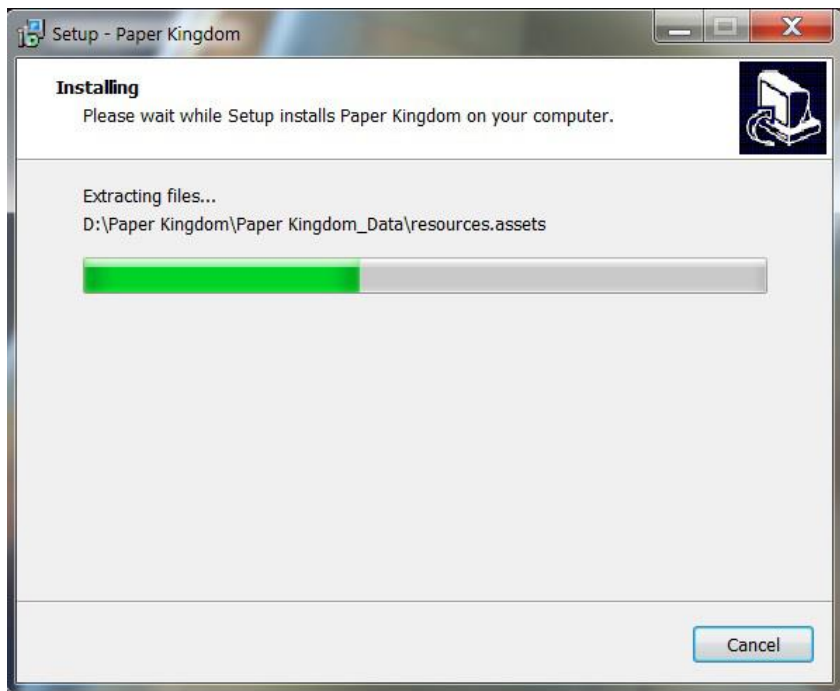
- The Select Additional Tasks box will appear. We recommend you check the Create a desktop icon box. When ready, click on the **Next** button.



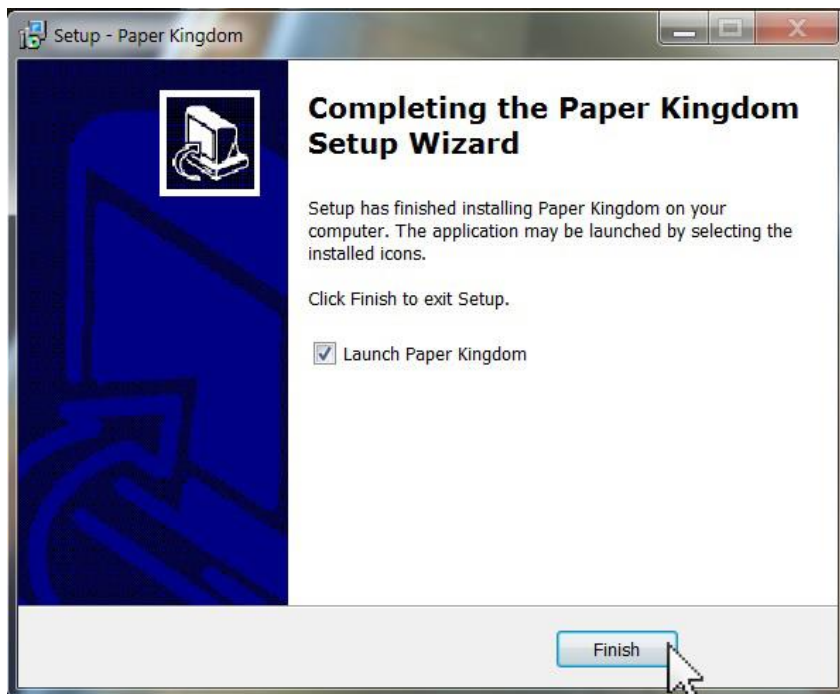
- The Ready to Install box will appear. Click on the **Install** button to continue the installation.



- The Installing box will appear. Wait for the green bar to complete.



10. The Completing the Paper Kingdom Setup Wizard box will appear. We recommend you leave the Launch Paper Kingdom box checked. Press **Finish** to launch the game!



That's it! Paper Kingdom is ready to play.

The next time you wish to play, double-click on the icon that appeared on your desktop (if you left that option checked on step #7 of this guide).

If you have any problems installing this software or require assistance, please check the nhlbi.nih.gov website for support instructions.