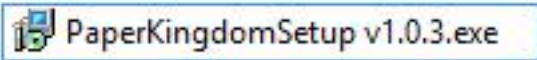


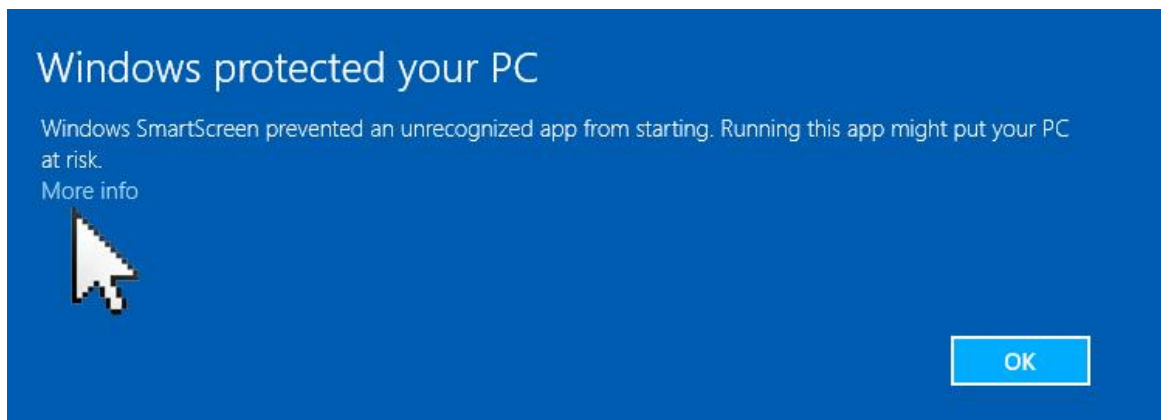
Paper Kingdom Installation Instructions – Windows 8

Thank you for your interest in playing Paper Kingdom! This document will walk you through the installation steps needed to get Paper Kingdom working on your Windows 8 computer. Follow along with this installation guide to get the game running on your computer.

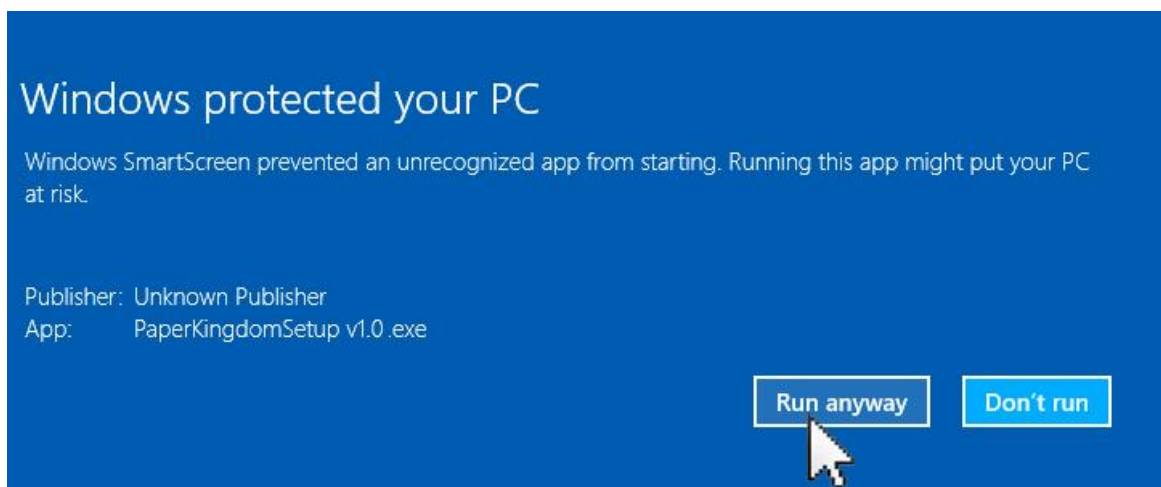
1. If your computer is currently running the Windows operating system, download the latest version of the Paper Kingdom game software for the Windows operating system from the nhlbi.nih.gov website.
2. Once the Paper Kingdom software has been downloaded to your computer, double-click on the installation file:



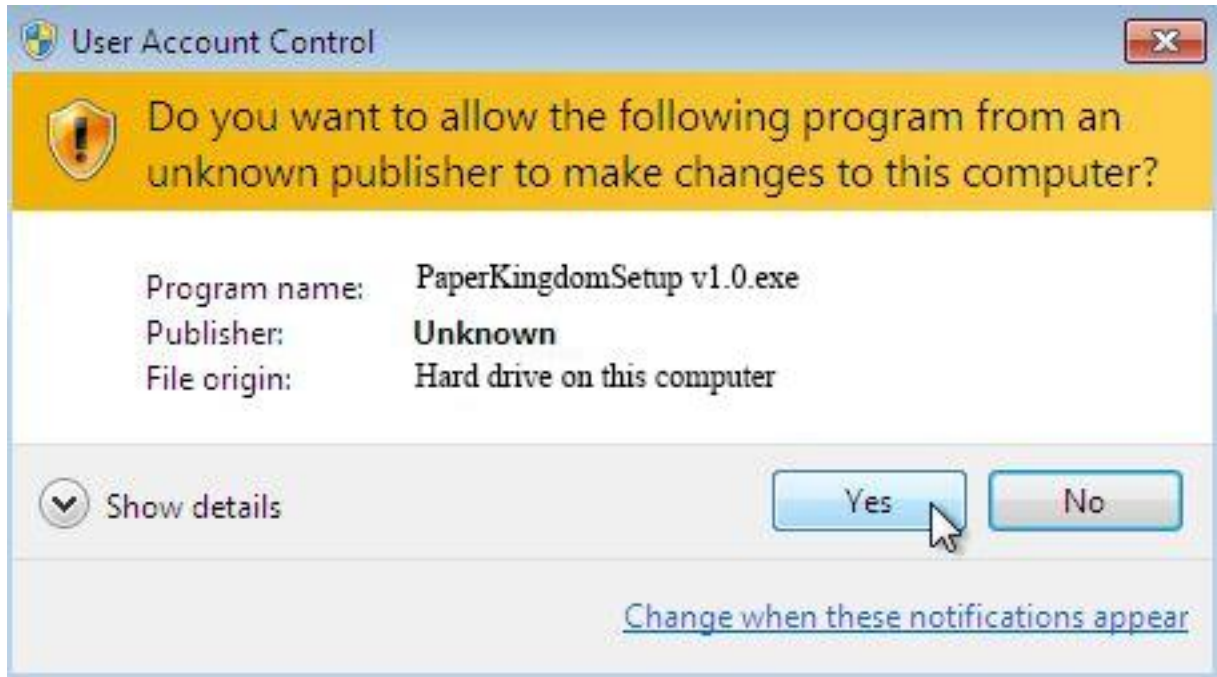
3. Windows 8 will tell you it has prevented an unrecognized app from starting. Don't worry, this is normal. Click on the **More Info** text.



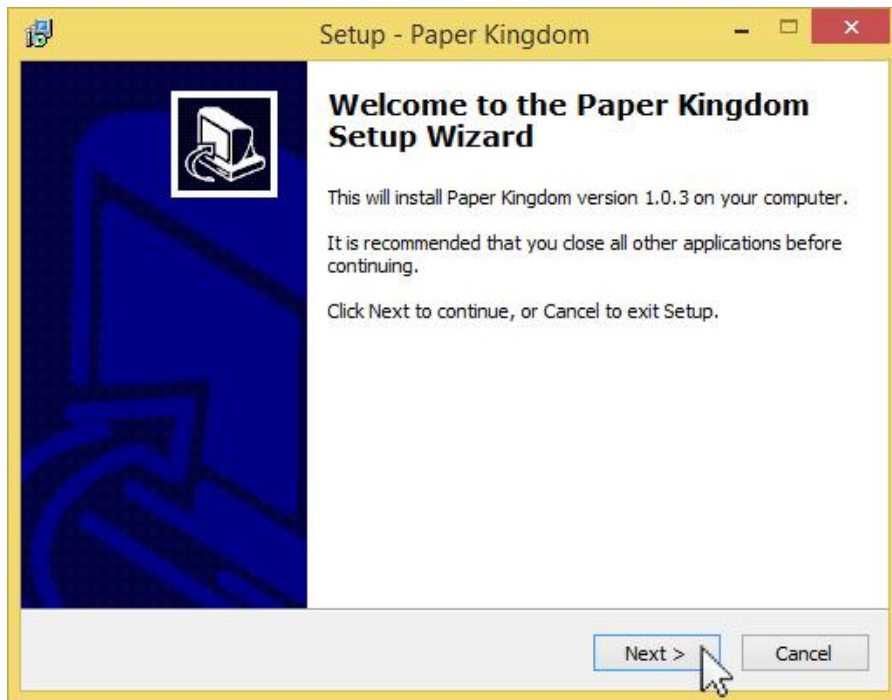
4. Click on the **Run anyway** button as shown below. The version number of the Paper Kingdom software may change, so don't worry if the numbers aren't exactly as those shown below.



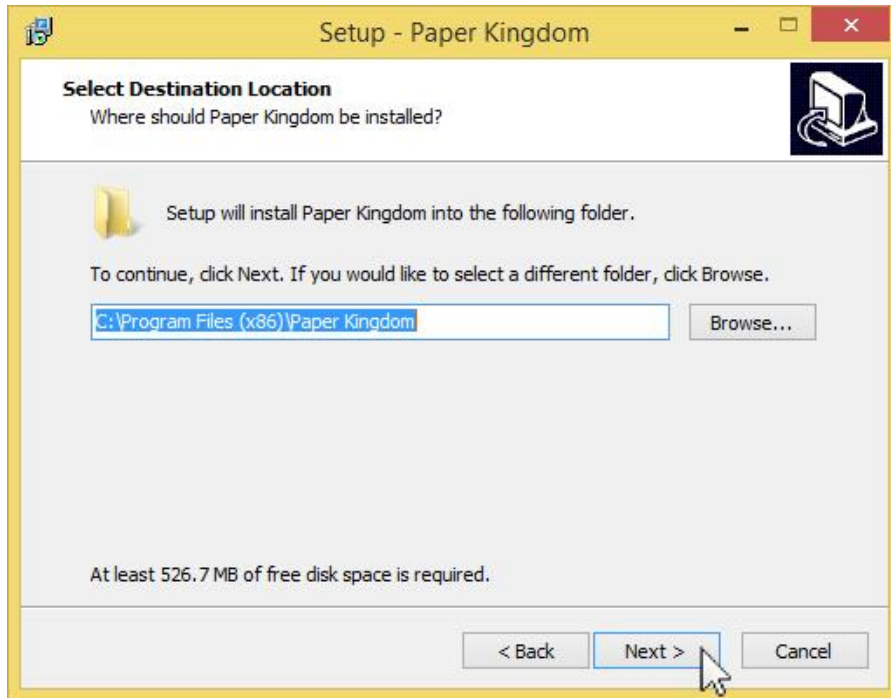
5. A User Account Control box will appear. Click on the Yes button to continue the installation.



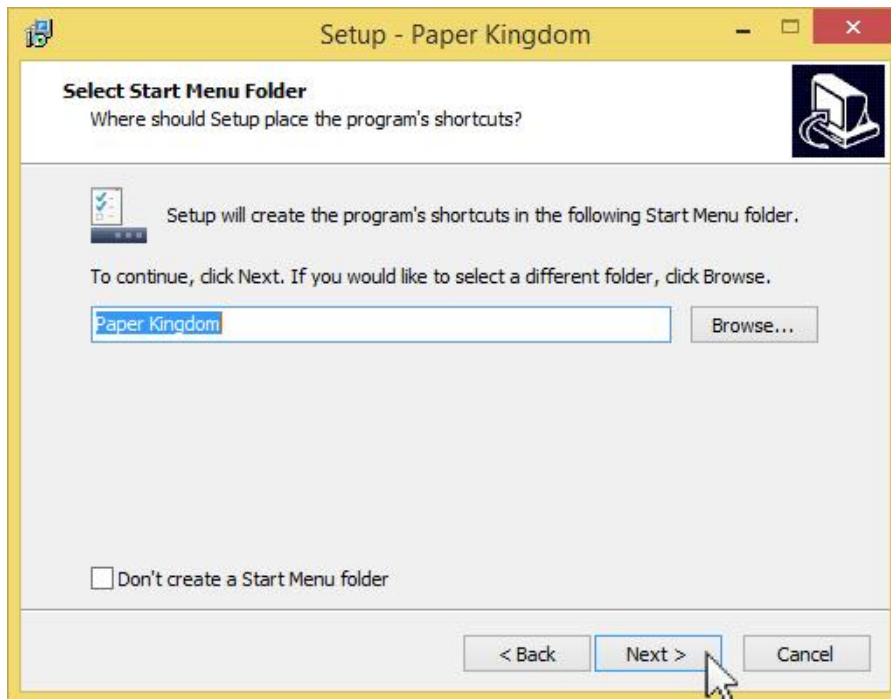
6. The Welcome to the Paper Kingdom Setup Wizard box will appear. Click on the **Next** button.



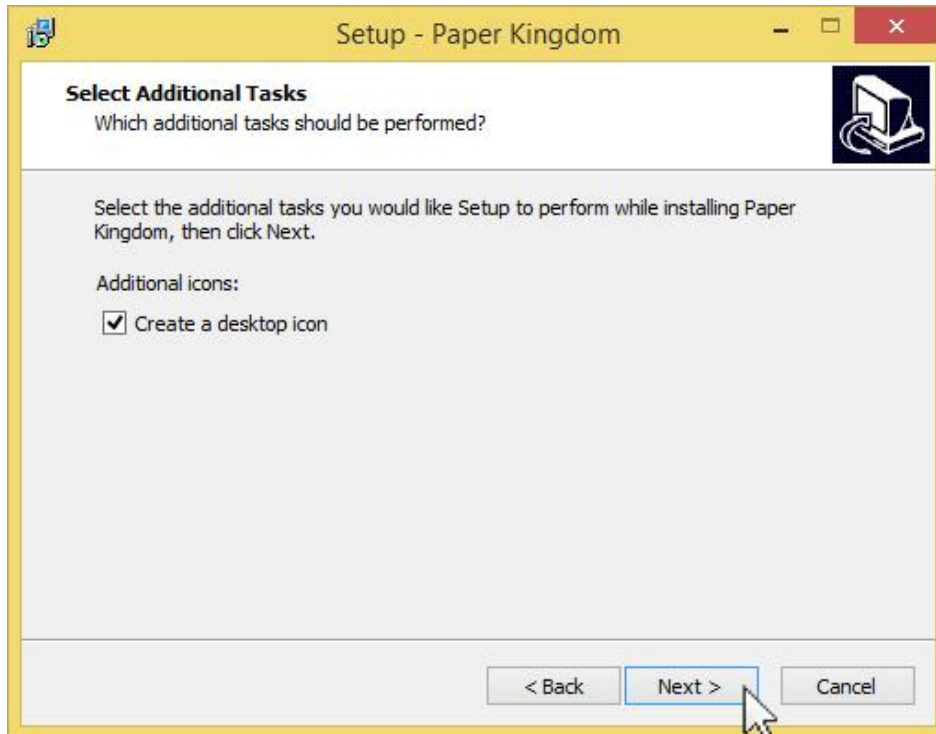
7. The Select Destination Location box will appear. Review and/or change the installation location if you wish. Then click on the **Next** button.



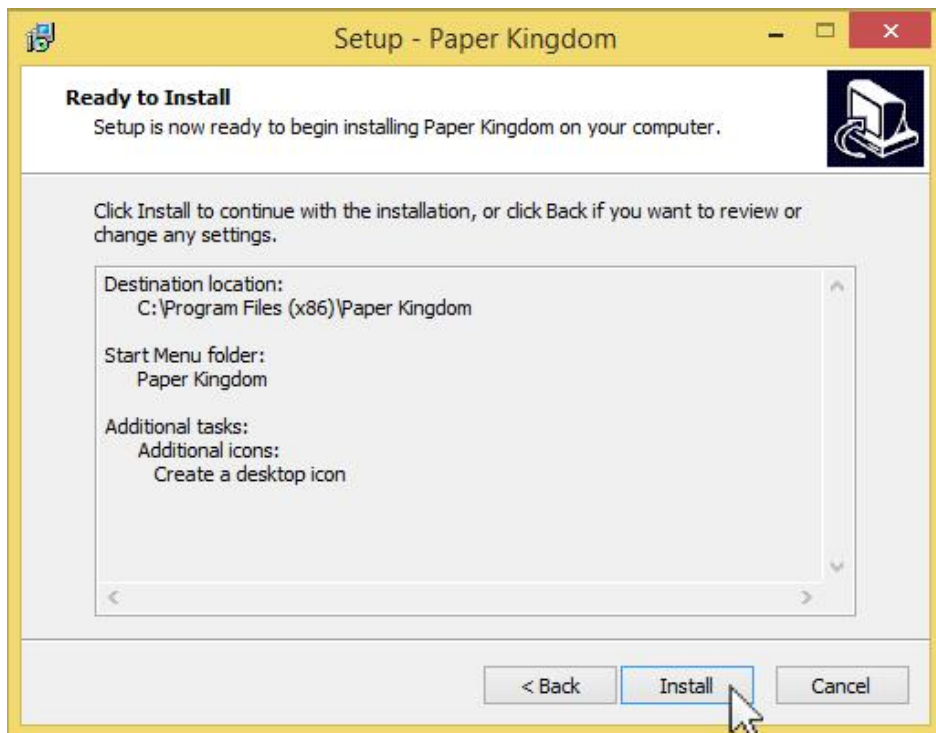
8. The Select Start Menu Folder will appear. Review and/or change the folder name and press the **Next** button when ready to continue with the installation.



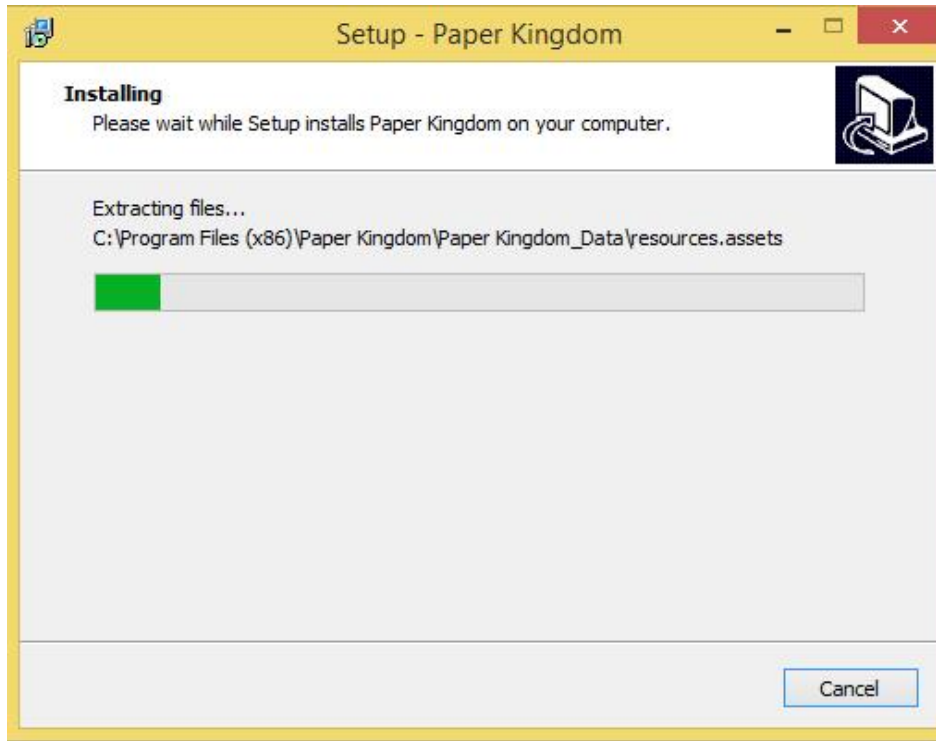
9. The Select Additional Tasks box will appear. We recommend you check the box to Create a desktop icon. Review and/or check the Create a desktop icon box and press **Next** when ready to continue with the installation.



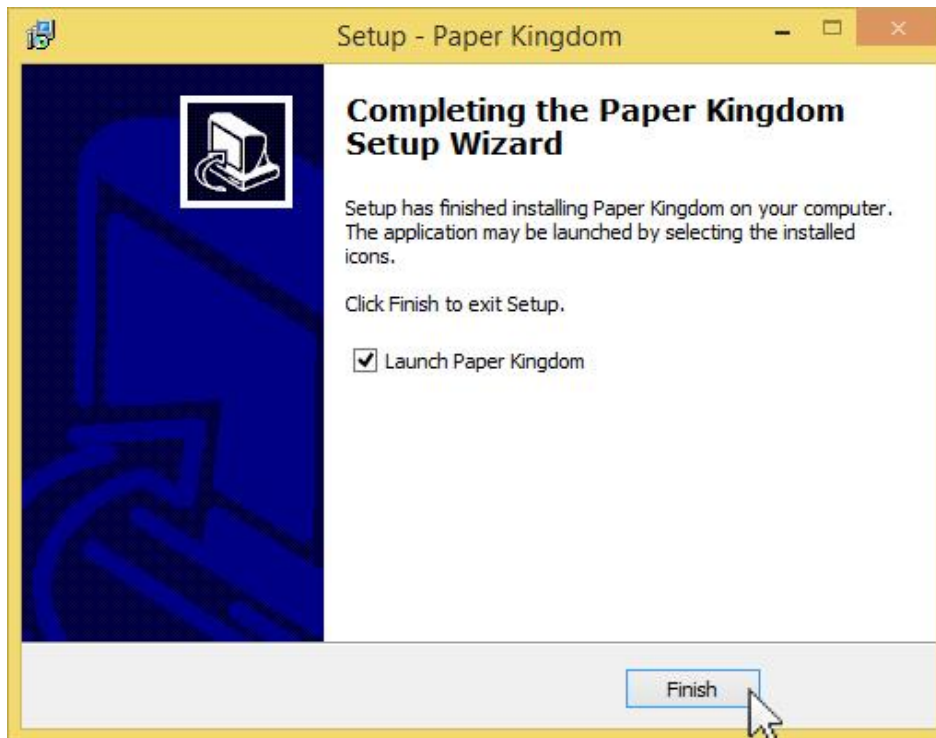
10. The Ready to Install box will appear. Click on the **Install** button to continue with the installation.



11. The Installing box will appear. Wait for the green bar to complete.



12. The Completing the Paper Kingdom Setup Wizard box will appear. We recommend you leave the Launch Paper Kingdom box checked and click on the **Finish** button. That's it! The Paper Kingdom game will load.



The next time you wish to play, double-click on the icon that appeared on your desktop (if you left that option checked on step #9 of this guide).

If you have any problems installing this software or require assistance, please check the nhlbi.nih.gov website for support instructions.